

SERIE 18A

43

AVO - Wheel with avolan polyurethane and steel castor for industry, diameter 200mm ean 28333

Material: Avolan
Polyurethane

Core:
Aluminum

Application field:
Industry

Description:

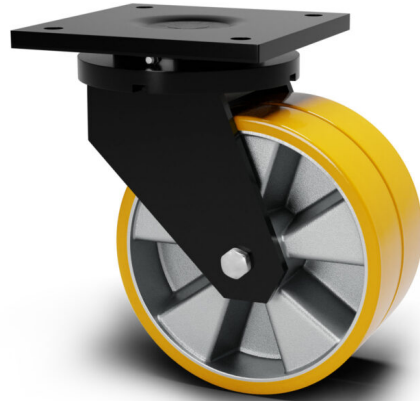
Wheel coated with cast Polyurethane tread AVOLAN 91 Shore A and aluminium centre. Hub on shielded ball bearings assembled with central spacer.

Twin Wheel Extra Heavy-Duty Castors:

Made of pressed and welded high thickness steel, turning on thrust and tapered roller bearings, with plate. Black epoxy paint.

Product line: Polyurethane

EAN13:8018793283335 **EAN5:**28333 **Article code:**2104300200ACU



Features

Minimum temperature: -20 **Maximum temperature:** 80 **Dynamic load capacity:** 1600 DaN
Rotation: Ball bearing **Hardness scale:** Shore A **Hardness:** 91

Flooring

- Asphalt
- Concrete
- Grid
- Stoneware

Wheel data

Diameter (mm)	200
Band width (mm)	50
Hub width (mm)	60
Hub version	Ball bearing
Wheel hole (mm)	20
Bearing seat (mm)	47X14
Dynamic load capacity (DaN)	1600
Colour	Yellow
Material	Avolan Polyurethane
Box pieces	/
Hardness scale	Shore A
Hardness	91

Support data

Plate size (mm)	200X200
Plate hole spacing (mm)	160X160
Plate hole size (mm)	17
Offset (mm)	72
Ground clearance (mm)	270
Castor hole (mm)	/
Static load capacity (DaN)	2000
Structure	Swivel
Version	Plate
Brake	/
Plain axle	/
Stem type	/
Finishing	Black painted