

SERIE 15

33DIRTBIS

AVO - Wheel with avoprene polyurethane and steel castor for industry, diameter 250mm ean 28212

Material: Avoprene
Polyurethane

Core: Cast
Iron

Application field:
Industry

Description:

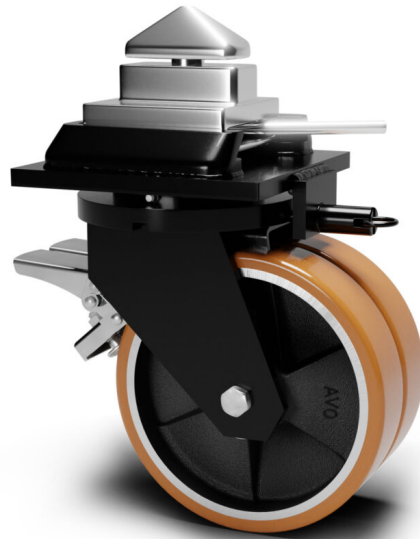
Wheel coated with cast Polyurethane tread AVOPRENE 91 Shore A and mechanical black painted cast iron centre. Hub on shielded ball bearings assembled with central spacer.

Twin Wheel Extra Heavy-Duty Castors:

Made of heavy-gauge pressed and welded steel, swivel-mounted on a thrust bearing and tapered roller bearings, with top plate and directional lock. Black epoxy coating. Equipped with ISO Twist Lock fitting and 4-position directional lock.

Product line: Polyurethane

EAN13:8018793282123 **EAN5:**28212 **Article code:**13T33DF250GCA



Features

Minimum temperature: -20 **Maximum temperature:** 80 **Dynamic load capacity:** 2800 DaN
Rotation: Ball bearing **Hardness scale:** Shore A **Hardness:** 91

Flooring

- Asphalt
- Concrete
- Grid
- Stoneware

Wheel data

Diameter (mm)	250
Band width (mm)	60
Hub width (mm)	60
Hub version	Ball bearing
Wheel hole (mm)	25
Bearing seat (mm)	52X15
Dynamic load capacity (DaN)	2800
Colour	Brown
Material	Avoprene Polyurethane
Box pieces	/
Hardness scale	Shore A
Hardness	91

Support data

Plate size (mm)	230X230
Plate hole spacing (mm)	190X190
Plate hole size (mm)	19
Offset (mm)	80
Ground clearance (mm)	364
Castor hole (mm)	/
Static load capacity (DaN)	3500
Structure	Swivel
Version	Plate with brake
Brake	Directional lock
Plain axle	/
Stem type	/
Finishing	Black painted