

SERIE 15

33DIRTBIS

AVO - Wheel with avoprene polyurethane and steel castor for industry, diameter 300mm ean 28133

Material: Avoprene Polyurethane

Core: Cast Iron

Application field: Industry

Description:

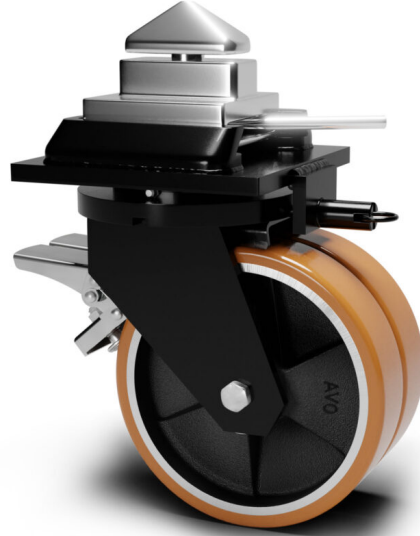
Wheel coated with cast Polyurethane tread AVOPRENE 91 Shore A and mechanical black painted cast iron centre. Hub on shielded ball bearings assembled with central spacer.

Twin Wheel Extra Heavy-Duty Castors:

Made of heavy-gauge pressed and welded steel, swivel-mounted on a thrust bearing and tapered roller bearings, with top plate and directional lock. Black epoxy coating. Equipped with ISO Twist Lock fitting and 4-position directional lock.

Product line: Polyurethane

EAN13:8018793281331 **EAN5:**28133 **Article code:**13T33DF300GCA



Features

Minimum temperature: -20 **Maximum temperature:** 80 **Dynamic load capacity:** 4000 DaN
Rotation: Ball bearing **Hardness scale:** Shore A **Hardness:** 91

Flooring

- Asphalt
- Concrete
- Grid
- Stoneware

Wheel data

Diameter (mm)	300
Band width (mm)	70
Hub width (mm)	70
Hub version	Ball bearing
Wheel hole (mm)	30
Bearing seat (mm)	62X16
Dynamic load capacity (DaN)	4000
Colour	Brown
Material	Avoprene Polyurethane
Box pieces	/
Hardness scale	Shore A
Hardness	91

Support data

Plate size (mm)	230X230
Plate hole spacing (mm)	190X190
Plate hole size (mm)	19
Offset (mm)	83
Ground clearance (mm)	419
Castor hole (mm)	/
Static load capacity (DaN)	5000
Structure	Swivel
Version	Plate with brake
Brake	Directional lock
Plain axle	/
Stem type	/
Finishing	Black painted