

SERIE 114A

121A

AVO - Wheel with mechanical cast iron and steel castor for industry, diameter 150mm ean 28449

Material: Mechanical Cast iron **Core:** Cast Iron **Scope:** Industry

Description:

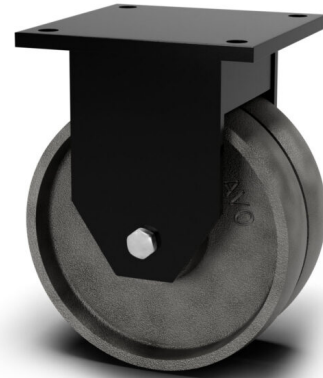
Cast iron wheel, resistant to high temperatures with low rolling resistance. Hub on shielded ball bearings. Special ball bearings for high or low temperatures are available on request.

Twin Wheel Extra Heavy-Duty Castors:

Made of pressed and welded high thickness steel, fixed. Black epoxy paint.

Product line: High temperature, Cast Iron

EAN13:8018793284493 **EAN5:**28449 **Article code:**04121A0150GGP



Features

Minimum temperature: -20

Maximum temperature: 120

Dynamic load capacity: 1500 DaN

Rotation: Ball bearing

Hardness scale: HB

Hardness: 200

Flooring

- Asphalt
- Concrete

Wheel data

Diameter (mm)	150
Band width (mm)	38
Hub width (mm)	38
Hub version	Ball bearing
Wheel hole (mm)	17
Bearing seat (mm)	40X12
Dynamic load capacity (DaN)	1500
Colour	Grey
Material	Mechanical Cast iron
Box pieces	/
Hardness scale	HB
Hardness	200

Support data

Plate size (mm)	170X170
Plate hole spacing (mm)	130X130
Plate hole size (mm)	13
Offset (mm)	/
Ground clearance (mm)	210
Castor hole (mm)	/
Static load capacity (DaN)	1875
Structure	Fixed
Version	/
Brake	/
Plain axle	/
Stem type	/
Finishing	Black painted