

SERIE 302AT

302AT

AVO - Wheel with polyamide 6 and steel castor for furniture,
diameter 40mm ean 16476

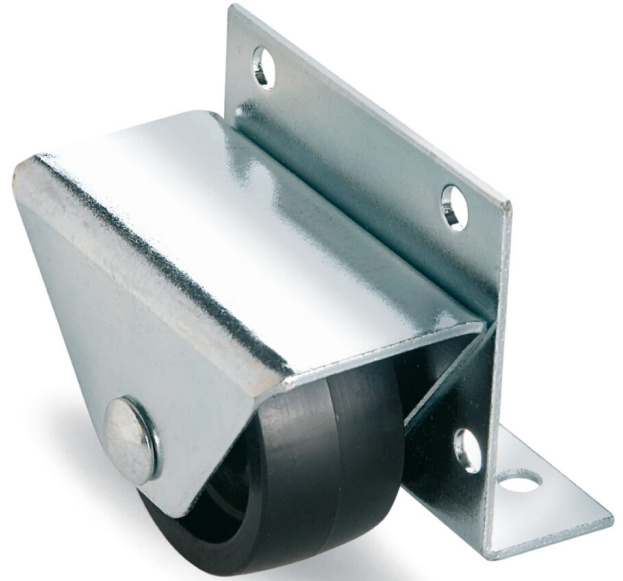
Material: Polyamide 6 **Core:** Polyamide 6 **Application field:** Furniture

Description:

Wheel with thermoplastic black tyre, zinc-plated steel fixed castor. Main use for drawers.

Product line: Furniture

EAN13:8018793164764 **EAN5:**16476 **Article code:**SC302A004000T



Features

Minimum temperature: / **Maximum temperature:** / **Dynamic load capacity:** 15 DaN
Rotation: Plain bore **Hardness scale:** Shore D **Hardness:** 82

Flooring

- Moquette
- Stoneware

Wheel data

Diameter (mm)	40
Band width (mm)	/
Hub width (mm)	/
Hub version	Plain bore
Wheel hole (mm)	/
Bearing seat (mm)	/
Dynamic load capacity (DaN)	15
Colour	Black
Material	Polyamide 6
Box pieces	12
Hardness scale	Shore D
Hardness	82

Support data

Plate size (mm)	35X35
Plate hole spacing (mm)	/
Plate hole size (mm)	/
Offset (mm)	/
Ground clearance (mm)	/
Castor hole (mm)	/
Static load capacity (DaN)	20
Structure	Fixed
Version	/
Brake	/
Plain axle	/
Stem type	/
Finishing	Galvanized