

SERIE 116-P

137

AVO - Wheel with polyamide 6 and steel castor for industry,
diameter 200mm ean 22328

Material: Polyamide 6 **Core:** Polyamide 6 **Application field:** Industry

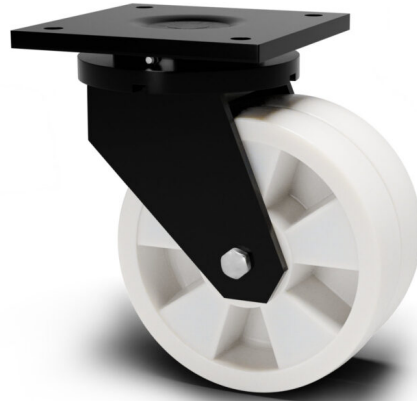
Description:

Heavy monolithic Polyamide 6 wheel. Hub on plain bore, roller bearings or shielded ball bearings assembled with central spacer.

Twin Wheel Extra Heavy-Duty Castors:

Product line: Polyamide

EAN13:8018793223287 **EAN5:**22328 **Article code:**0513700200SCN



Features

Minimum temperature: -25 **Maximum temperature:** 85 **Dynamic load capacity:** 1600 DaN
Rotation: Ball bearing **Hardness scale:** Shore D **Hardness:** 82

Flooring

- Concrete
- Stoneware

Wheel data

Diameter (mm)	200
Band width (mm)	57
Hub width (mm)	60
Hub version	Ball bearing
Wheel hole (mm)	25
Bearing seat (mm)	52X15
Dynamic load capacity (DaN)	1600
Colour	White
Material	Polyamide 6
Box pieces	/
Hardness scale	Shore D
Hardness	82

Support data

Plate size (mm)	200X200
Plate hole spacing (mm)	160X160
Plate hole size (mm)	17
Offset (mm)	72
Ground clearance (mm)	270
Castor hole (mm)	/
Static load capacity (DaN)	2000
Structure	Swivel
Version	Plate
Brake	/
Plain axle	/
Stem type	/
Finishing	Black painted