

SERIE 14

29

AVO - Wheel with avolan polyurethane and steel castor for industry, diameter 250mm ean 13229

Material: Avolan
Polyurethane

Core: Cast
Iron

Application field:
Industry

Description:

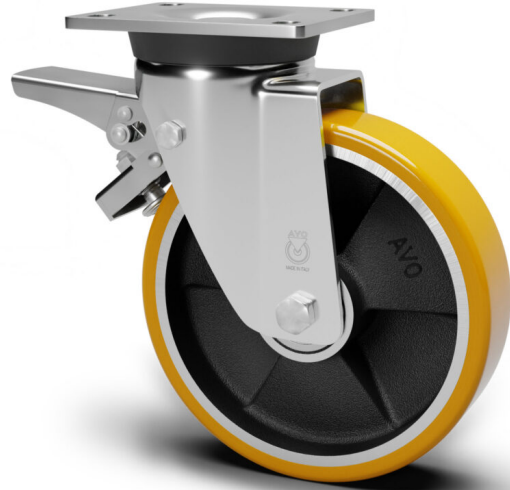
Wheel coated with cast Polyurethane tread AVOLAN 91 Shore A and mechanical black painted cast iron centre. Hub on shielded ball bearings assembled with central spacer.

Heavy-Duty Castors:

Made of zinc-chromium plated pressed steel, high thickness, turning on double rim of balls fitted in hardening steel thrust-bearings, with plate and rear brake. Assembled with self-locking nut.

Product line: Polyurethane

EAN13:8018793132299 **EAN5:**13229 **Article code:**1102900250LCU



Features

Minimum temperature: -20 **Maximum temperature:** 80 **Dynamic load capacity:** 800 DaN
Rotation: Ball bearing **Hardness scale:** Shore A **Hardness:** 91

Flooring

- Asphalt
- Concrete
- Grid
- Stoneware

Wheel data

Diameter (mm)	250
Band width (mm)	60
Hub width (mm)	60
Hub version	Ball bearing
Wheel hole (mm)	25
Bearing seat (mm)	52X15
Dynamic load capacity (DaN)	800
Colour	Yellow
Material	Avolan Polyurethane
Box pieces	/
Hardness scale	Shore A
Hardness	91

Support data

Plate size (mm)	135X110
Plate hole spacing (mm)	105X080
Plate hole size (mm)	13X16
Offset (mm)	74
Ground clearance (mm)	300
Castor hole (mm)	/
Static load capacity (DaN)	1000
Structure	Swivel
Version	Plate with brake
Brake	Rear
Plain axle	/
Stem type	/
Finishing	Galvanized