

SERIE 303

303

AVO - Wheel with non-marking rubber tyre and steel castor for furniture, diameter 40mm ean 16481

Material: Non-marking Rubber tyre

Core: Polypropylene

Application field: Furniture

Description:

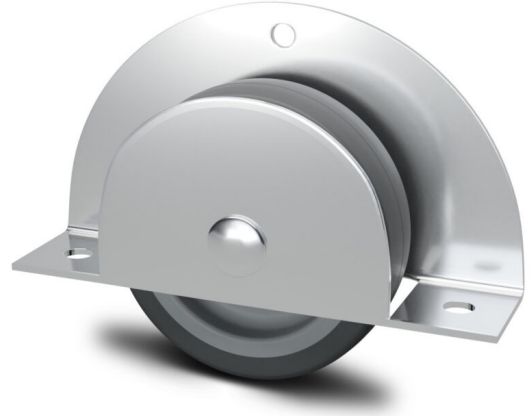
Wheel with gray synthetic rubber tyre, zinc-plated steel fixed castor. Main use for beds.

Product line: Furniture

EAN13:8018793164818

EAN5:16481

Article code:SC3030004000G



Features

Minimum temperature: /

Maximum temperature: /

Dynamic load capacity: 15 DaN

- Stoneware
- Wood

Rotation: Plain bore

Hardness scale: Shore D

Hardness: 85

Flooring

Wheel data

Diameter (mm)	40
Band width (mm)	/
Hub width (mm)	/
Hub version	Plain bore
Wheel hole (mm)	/
Bearing seat (mm)	/
Dynamic load capacity (DaN)	15
Colour	Grey
Material	Non-marking Rubber tyre
Box pieces	12
Hardness scale	Shore D
Hardness	85

Support data

Plate size (mm)	35X35
Plate hole spacing (mm)	/
Plate hole size (mm)	/
Offset (mm)	/
Ground clearance (mm)	/
Castor hole (mm)	/
Static load capacity (DaN)	20
Structure	Fixed
Version	/
Brake	/
Plain axle	/
Stem type	/
Finishing	Galvanized