

SERIE 16N

66B

AVO - Wheel with cut-resistant rubber tyre and steel castor for industry, diameter 125mm ean 20799

Material: Cut-resistant Rubber tyre

Core: Polyamide 6

Application field: Industry

Description:

Wheel with elastic rubber coating, stain-resistant, cut-resistant, grey or black 68 Shore A and core in Polyamide 6. Hub on shielded ball bearings assembled with central spacer.

Medium duty castors:

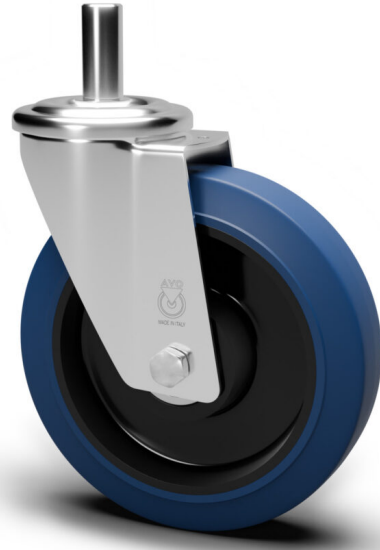
Made of zinc-chromium plated pressed steel, turning on double rim of balls, with stem. Assembled with self-locking nut.

Product line: Rubber tyre

EAN13:8018793207997

EAN5:20799

Article code:00S66B0126NRB



Features

Minimum temperature: -20

Maximum temperature: 70

Dynamic load capacity: 130 DaN

Rotation: Roller bearing

Hardness scale: Shore A

Hardness: 68

Flooring

- Asphalt
- Concrete
- Grid
- Stoneware

Wheel data

Diameter (mm)	125
Band width (mm)	36
Hub width (mm)	50
Hub version	Roller bearing
Wheel hole (mm)	15
Bearing seat (mm)	/
Dynamic load capacity (DaN)	130
Colour	Blue
Material	Cut-resistant Rubber tyre
Box pieces	/
Hardness scale	Shore A
Hardness	68

Support data

Plate size (mm)	/
Plate hole spacing (mm)	/
Plate hole size (mm)	/
Offset (mm)	42
Ground clearance (mm)	150
Castor hole (mm)	/
Static load capacity (DaN)	170
Structure	Swivel
Version	Axle
Brake	/
Plain axle	22X50
Stem type	Stem(on request threaded stem) Plain axle
Finishing	Galvanized