

SERIE 16N

67A

AVO - Wheel with elastic rubber tyre and steel castor for industry, diameter 150mm ean 21835

Material: Elastic Rubber tyre **Core:** Polyamide 6 **Scope:** Industry

Description:

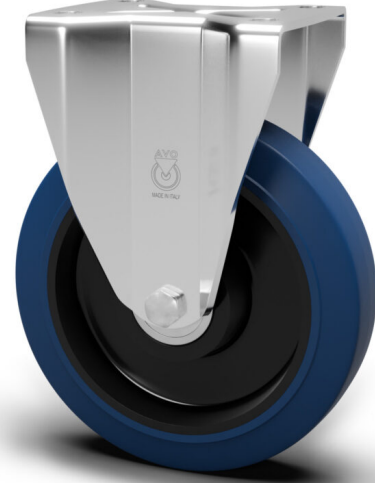
Wheel with elastic rubber coating, stain-resistant, cut-resistant, grey or black 68 Shore A and core in Polyamide 6. Hub on shielded ball bearings assembled with central spacer.

Heavy-Duty Castors:

Made of zinc-chromium plated pressed steel, fixed. Assembled with self-locking nut.

Product line: Rubber tyre

EAN13:8018793218351 **EAN5:**21835 **Article code:**00067A0150NRB



Features

Minimum temperature: -20 **Maximum temperature:** 70 **Dynamic load capacity:** 300 DaN
Rotation: Roller bearing **Hardness scale:** Shore A **Hardness:** 68

Flooring

- Asphalt
- Concrete
- Grid
- Stoneware

Wheel data

Diameter (mm)	150
Band width (mm)	50
Hub width (mm)	58
Hub version	Roller bearing
Wheel hole (mm)	20
Bearing seat (mm)	/
Dynamic load capacity (DaN)	300
Colour	Blue
Material	Elastic Rubber tyre
Box pieces	/
Hardness scale	Shore A
Hardness	68

Support data

Plate size (mm)	135X110
Plate hole spacing (mm)	105X080
Plate hole size (mm)	13X16
Offset (mm)	/
Ground clearance (mm)	211
Castor hole (mm)	/
Static load capacity (DaN)	380
Structure	Fixed
Version	/
Brake	/
Plain axle	/
Stem type	/
Finishing	Galvanized