

SERIE 16N

# 67A

AVO - Wheel with elastic rubber tyre and steel castor for industry, diameter 200mm ean 14425

**Material:** Elastic Rubber tyre    **Core:** Polyamide 6    **Scope:** Industry

**Description:**

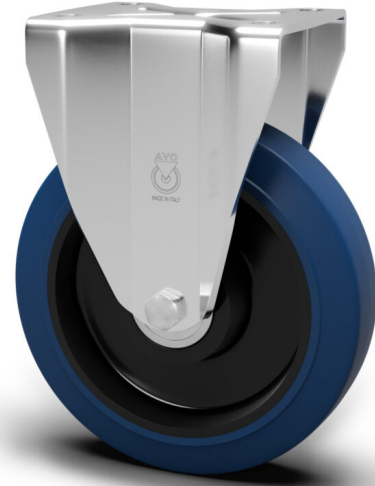
Wheel with elastic rubber coating, stain-resistant, cut-resistant, grey or black 68 Shore A and core in Polyamide 6. Hub on shielded ball bearings assembled with central spacer.

**Heavy-Duty Castors:**

Made of zinc-chromium plated pressed steel, fixed. Assembled with self-locking nut.

**Product line:** Rubber tyre

**EAN13:**8018793144254    **EAN5:**14425    **Article code:**00067A0200NRB



## Features

**Minimum temperature:** -20    **Maximum temperature:** 70    **Dynamic load capacity:** 400 DaN  
**Rotation:** Roller bearing    **Hardness scale:** Shore A    **Hardness:** 68

## Flooring

- Asphalt
- Concrete
- Grid
- Stoneware

## Wheel data

Diameter (mm)	200
Band width (mm)	50
Hub width (mm)	58
Hub version	Roller bearing
Wheel hole (mm)	20
Bearing seat (mm)	/
Dynamic load capacity (DaN)	400
Colour	Blue
Material	Elastic Rubber tyre
Box pieces	/
Hardness scale	Shore A
Hardness	68

## Support data

Plate size (mm)	135X110
Plate hole spacing (mm)	105X080
Plate hole size (mm)	13X16
Offset (mm)	/
Ground clearance (mm)	251
Castor hole (mm)	/
Static load capacity (DaN)	500
Structure	Fixed
Version	/
Brake	/
Plain axle	/
Stem type	/
Finishing	Galvanized